

# DOMESTIC PRODUCTS

WINTER 2018/19



# PICK THE RIGHT TEAM

Welcome to the Grundfos 2018/19 Domestic Products Catalogue, which has information on our most popular domestic pump ranges, in one easy to read brochure. In this latest edition, we have some great news for you regarding the introduction of three new ground breaking domestic circulators - the **ALPHA3**, **ALPHA1** and **UPS3**.

**Top of the range** is the new state of the art **ALPHA3 (MODEL B) 15-50/60** which redefines what a small circulator can do, offering built in two-way data communication via Bluetooth directly with the GO REMOTE app (for commissioning) and the GO BALANCE app (for hydronic balancing).

**The mid-range option** is the compact high efficiency **ALPHA1 15-50/60** (replacing the ALPHA2 L) with market leading energy efficiency rating of  $EEL \leq 0.17$ , robust start up function, improved hydraulics and additional constant & proportional pressure curves. There is also a new ALPHA1 15-50 N variant available for secondary hot water.

**The STAR PLAYER** of the team is the **UPS3 15-65** which replaces the UPS2. Based on proven technology used in millions of boilers, the more compact UPS3 has improved efficiency  $EEL \leq 0.20$  (versus UPS2  $EEL \leq 0.23$ ), manual unblocking and robust start-up, extra performance up to 6.5m head, Constant Pressure (CP) modes for underfloor heating, a new external plug, alarm indication and the pump head is compatible with previous UPS 15-xx series and ALPHA2 L bases. The versatile UPS3 can also be used to replace many of the pumps inside a boiler. Use the **Grundfos GO REPLACE app** to identify whether the UPS3 is a suitable replacement for an internal pump.

Please turn to page 4 to find out more about these leading-edge circulators.



## NEW SMART PHONE APPS FOR DOMESTIC CIRCULATORS



### GO REPLACE - for use with UPS3

To see if the UPS3 can be used to replace a pump (whether inside or outside a boiler) simply scan the old pump and follow the instructions, in seconds you will have the answer.



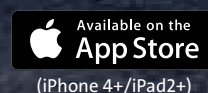
### GO BALANCE - for use with ALPHA3

In a balanced system heat reaches all rooms, in addition noise and energy costs are reduced. Follow the instructions on the app to wirelessly hydraulically balance a heating system. The earlier ALPHA3 Model A requires an ALPHA Reader, whereas the latest Model B operates without the need for a reader (the ALPHA Reader can be used with Model B as a range extender if needed).



### GO REMOTE – for use with ALPHA3 (& MAGNA3)

The app delivers an easy and reliable remote-control tool for installers for commissioning and maintenance – providing fast and simple, set up, control and monitoring of the pump.



# INDEX

- 2** **GRUNDFOS WELCOME & APPS** - A welcome featuring our latest products and app technology.
- 3** **GRUNDFOS ECADEMY** - Learn more about pumps, pump theory and applications.
- 4** **DOMESTIC HEATING CIRCULATORS** - Pumps for circulation of hot water in central heating systems and domestic hot water service, for domestic situations.
- 5** **LIGHT COMMERCIAL HEATING CIRCULATORS** - For installation on central heating circuits in larger domestic properties and small commercial premises.
- 6** **HOT WATER SERVICE PUMP** - Energy efficient pumps designed for secondary hot water distribution to circulate water in the system to ensure hot water is available on demand.
- 7** **CONDENSATE REMOVAL** - Designed for the safe removal condensate from domestic and light commercial appliances.  
**FireSAFE** - The Grundfos FireSAFE Domestic Range provides a compact, consumer and installer friendly for domestic fire suppression systems.
- 8** **SHOWERPUMPS** - The shower booster pump range to increase water pressure to a gravity fed hot water systems.
- 10** **WATER PRESSURE BOOSTING** - Pressure boosting pumps for single and multiple outlets or whole house applications.
- 12** **BOOSTER PUMP SELECTOR GUIDE** - An easy to use selector guide to help you make the right choice of pump.
- 14** **SHOWER PUMP BASICS** - A quick guide to shower pump basics.
- 15** **SHOWER BOOSTER APPLICATION GUIDE** - A quick illustrated reference of what pumps can be used and where you can use them.
- 16** **MACERATORS & WASTE WATER REMOVAL** - The Grundfos Sololift2 range has completely revolutionised the addition of extra facilities away from the main soil stack.
- 18** **SOLOLIFT 2 SELECTOR GUIDE** - A quick reference and application guide with accessories.
- 20** **GREYWATER REMOVAL** - Submersible drainage pump range designed for pumping clean, non-aggressive water & slightly dirty (grey) water.
- 21** **GRUNDFOS PRODUCT CENTER** - The online product selection tool.
- 22** **GRUNDFOS INSTALLER COMPANION APP** - A valuable mobile assistant developed specifically for plumbers, installers and heating engineers.
- 23** **DOMESTIC CIRCULATORS QUICK GUIDE** - A guide to the latest domestic circulator pump range and which pumps they replace and which pumps they are compatible with.

## JOIN THE GRUNDFOS ECADEMY



## GRUNDFOS ECADEMY

Want to learn more about pumps, pump theory and applications?

The Grundfos Academy is an online educational platform for installers, fitters, engineers and merchant counter staff. Optimised into "bite-sized" modules and reformatted for use with tablets and smartphones, learning on the go has never been easier.

Find out more by visiting [www.grundfos.co.uk/ecademy](http://www.grundfos.co.uk/ecademy)



## DOMESTIC HEATING CIRCULATORS

**UPS3 15-50/65****What it does**

The New UPS3 supersedes the best-selling domestic circulator in the UK. Built on a high reliability platform proven in millions of boilers, the new UPS3 improves on efficiency, head, diagnostics and fitting time.

**Typical Applications**

With just one model the UPS3 can be used to replace previous UPS & UPS2 models up to 6m. For replacing the pump inside a boiler refer to the Grundfos GO REPLACE app to identify suitability.

**Features & Benefits**

- EEI  $\leq 0.20$
- 130mm port to port
- One model for up to 6.5m head
- Backward compatible with older Grundfos circulator housings
- LED fault reporting
- Anti-blocking port
- For properties up to 5 bedrooms
- 3 fixed speed modes
- Proportional (PP) modes
- Underfloor (CP) modes
- 5 year warranty

**Product Code**

UPS3 15-50/65 - 99199622

**Accessories/Spares**

Installer plug - 99439948

**READY, STEADY, GO REPLACE**

Clever design means on many boilers the UPS3 can replace OEM internal pumps, saving time and money. The Grundfos GO REPLACE app identifies whether UPS3 can be used to replace an existing pump. Simply download the GO REPLACE app from App Store or Google Play and scan the pump plate for an instant response.



(iPhone 4+ / iPad2+)



(Android 4.0+)

To find out more scan the QR code or visit [grundfos.co.uk/go-replace](http://grundfos.co.uk/go-replace)

**ALPHA1 15-50/60****What it does**

The Grundfos ALPHA1 is the highest efficiency domestic circulator on the market, with an EEI  $\leq 0.17$ .

**Typical Applications**

ALPHA1 has a special constant pressure mode for underfloor heating and single pipe heating systems. Typical use – up to 5 bedroom house <30kW boiler.

**Features & Benefits**

- EEI  $\leq 0.17$
- 130mm port to port
- ALPHA Plug for ease of wiring
- One touch operation enables simple set up
- 3 fixed speed modes
- Suitable for underfloor heating
- Proportional (PP) modes
- Underfloor (CP) modes
- Quiet Operation – minimal system & valve noise
- Heat/noise insulation shells included
- 5 year warranty
- Combined 15-50/60 in one pump

**Product Code**

ALPHA1 15-50/60 - 99415672

**Accessories/Spares**

ALPHA plug - 98284561

**NEW ALPHA3 15-50/60 (Model B)****What it does**

The UK's most energy efficient domestic heating pump, with integrated two-way Bluetooth communication via Grundfos GO REMOTE app. With wireless hydronic balancing via Grundfos GO BALANCE app, saving time & typically 5-17% on heating energy costs.

**Typical Applications**

Generally for use with central heating circuits in homes with up to 5 bedrooms, with <30kW boiler. Ideal for new build and system refurbishments.

**Features & Benefits**

- Fast, wireless, accurate system balancing
- Antiblock start up and ceramic shaft for long life
- Energy Efficiency Index (EEI)  $\leq 0.17$
- Combined 15-50/60 in one pump
- Integrated control box
- ALPHA plug for easy wiring
- LED display showing power on, electrical usage, flow rate
- Heat/noise insulation shells included
- 5 year warranty
- Fixed speed modes
- Proportional (PP) modes
- Underfloor (CP) modes
- AUTOADAPT mode for optimal efficiency
- 130mm port to port

**Product Code**

ALPHA3 15-50/60 Model B - 99371966

**Accessories/Spares**

ALPHA Plug - 98284561

## LIGHT COMMERCIAL



### UPS2 (Light Commercial)

#### What it does

The new UPS2 25-80 & 32-80 are the perfect energy efficient replacement for the previous Grundfos UPS light commercial circulators, up to 8m head. The simple familiar design makes them an ideal, cost effective option.

#### Typical Applications

For installation on central heating circuits in larger properties with a 30kW to 50kW boiler.

#### Features & Benefits

- EEI ≤0.23
- 180mm port to port
- ALPHA plug for ease of wiring
- 3 fixed speeds
- Proportional (PP) modes

#### Product Code

UPS2 25-80 - 98707848

UPS2 32-80 - 98707851

#### Accessories/Spares

ALPHA Plug - 98284561



### MAGNA1

#### What it does

The MAGNA1 range of automatic and variable speed EuP 2015 compliant circulator pumps are the ideal replacement for the former UPS light commercial range. Designed for circulating liquids in a wide range of light commercial and commercial applications.

#### Typical Applications

Available from size 25-XX to 100-XX, MAGNA1 offers a full range of high-efficiency circulators for heating, cooling, ground source heat pump systems, solar heating systems and domestic hot water applications in areas such as apartment blocks, schools, hospitals, hotels, sporting arenas, industrial processes, commercial premises and many many more.

#### Features & Benefits

- Low energy consumption, with an EuP EEI rating that exceeds 2015 requirements
- Proportional (PP) modes
- Constant curve/speed
- Constant pressure
- 9 possible pump settings
- Easy installation
- Low noise
- Permanent magnet motor
- Handles liquid temperature range of -10°C to 110°C
- Max 10 bar system pressure (PN10)
- Max flow 70 m<sup>3</sup>/h, max head 18m
- Twin headed versions available (max flow 140 m<sup>3</sup>/h)

#### Plus new to MAGNA1 Model C

- Fault relay
- Digital input (stop/start)
- Wireless multipump function with time based alteration on twin head versions



### MAGNA3

#### What it does

MAGNA3 is the most energy efficient circulator on the market and comprises of a full range of medium and large, intelligent circulators. Incorporating electronically controlled motors based on permanent magnet (PM) and compact stator technology.

#### Typical Applications

The MAGNA3 range is designed for circulating liquids in heating systems; air conditioning and cooling systems, domestic water systems; ground source heat pump systems and solar heating systems in apartments, schools, hospitals, sporting arenas, hotels, industrial processes and many many more.

#### Features & Benefits

MAGNA3 offers all the features and benefits of MAGNA1 and in addition:

- AUTOADAPT – leave the pump on the factory setting and the pump will analyse the system demands and find the optimum setting
- FLOWLIMIT facility to limit max flow, no need to use a balancing valve on main flow & return pipe
- FLOWADAPT – combines the benefits of FLOWLIMIT & AUTOADAPT
- Heat Energy Monitor (additional sensor required)
- Max head 18m
- Night set back
- Analogue & digital inputs
- Relay outputs
- Works with wireless Grundfos GO REMOTE
- Twin Pump Control – duty/stand by rotation, auto changeover on fault and cascade option
- FN & N models are WRAS approved

## HOT WATER SERVICE PUMP

**UPS 15-50 N****What it does**

A traditional secondary hot water circulator.

**Typical Applications**

For secondary hot water distribution to circulate water in the system to ensure hot water is available on demand.

**Features & Benefits**

- Quiet operation
- Highest quality engineering and corrosion free materials for long life expectancy
- 130mm port to port
- WRAS approved

**Product Code**

UPS 15-50 N - 97549426

**ALPHA1 15-50 N****What it does**

ALPHA1 N is a high efficiency variable speed, stainless steel secondary hot water circulator.

**Typical Applications**

Advanced energy efficient secondary hot water circulator, ensures hot water is available on demand throughout the system.

**Features & Benefits**

- Energy Efficiency Index EEI  $\leq 0.20$
- Automatic variable speed and traditional fixed speed operation.
- Display shows power on and electrical usage
- Quiet operation, minimal system and valve noise
- Unique 'Plug and Pump' electrical connection.
- 130mm port to port
- WRAS approved

**Product Code**

ALPHA1 15-50 N - 99415696

**Accessories/Spares**

ALPHA plug – 98284561



**AUTOADAPT**  
version now  
available!

**COMFORT PM****What it does**

An energy efficient secondary hot water circulator.

**Typical Applications**

For use on secondary hot water distribution - **recommended for "pressurised" HWS systems only.**

**Features & Benefits**

- 4 models available
- Head removal for ease of maintenance
- Quiet operation
- 2 models with energy saving feature **AUTOADAPT** - where the pump analyses the system demands to find the optimum setting
- Highest quality engineering and corrosion free materials for long life expectancy
- 15-14 B PM GB & 15-14 BA PM GB port to port 80mm
- 15-14 BX PM GB & BXA PM GB port to port 140mm
- WRAS approved components

**Key**

B= Basic

A = **AUTOADAPT**

X = Non return valve & isolating valve

**Product Codes**

COMFORT 15-14 B PM GB - 99164484

COMFORT 15-14 BA PM GB  
(with **AUTOADAPT**) - 99164487

COMFORT 15-14 BX PM GB - 99164486

COMFORT 15-14 BXA PM GB  
(with **AUTOADAPT**) - 99164488

Spare Valve Kit (Shut Off & NRV) -  
00ID8748

## CONDENSATE REMOVAL



### CONIFT1 LS, CONIFT1

#### What it does

Safely removes condensate from appliances.

#### Typical Applications

Removal of condensate from boilers, air-con, cooling and refrigeration systems, air dehumidifiers and evaporators. Suited to domestic and light commercial situations.

#### Features & Benefits

- Boiler PRV discharge compatible
- Built-in on/off control
- Potential free contact
- Inlet and connection adaptors and hose included
- Mounting fixings
- Modern design
- Easy access enabling efficient cleaning

#### Product Code

CONIFT1 LS - 98452219

CONIFT1 - 97936173

#### Accessories

Alarm PCB - 97936209

Neutralisation Box - 97936176

## FIRE SAFETY



### Domestic FireSAFE

#### What it does

The Grundfos FireSAFE domestic range provides a compact, consumer and installer friendly response to the growing demand for domestic fire suppression systems and recent related legislative changes.

#### Typical Applications

The Grundfos FireSAFE domestic range can be used in a variety of domestic installations.

#### Features & Benefits

- Simple to install and commission
- Compact, unobtrusive footprint
- Minimal maintenance design
- Reliable, quiet Grundfos pumps
- Advanced system controller
- Automatic top up and self test
- Digital contacts for remote monitoring
- Digital inputs for tank low water switch and external flow activation switch (not supplied)
- Power output for external switches, simplifying wiring

#### Product Codes

FireSAFE CM3-3	98916439
FireSAFE CM3-5	98916440
FireSAFE CM5-3	98916461
FireSAFE CM5-4	98916462
FireSAFE CM10-2	90916463
FireSAFE CM10-3	98916464

## SHOWERPUMPS



## SURREY &amp; YORK FLANGES

**What it does**

Considered an industry standard, the Surrey flange is designed to provide an independent hot water supply as well as dramatically reduce air surging, noise and temperature variations. The Surrey flange air vent automatically purges the shower circuit, preventing air accumulation in the hot water shower feed (patent applied for). The vent automatically traps and releases air, preventing back feed of aerated hot water.

**Typical Applications**

The installation of a Surrey flange is recommended for shower pumps up to 3 bar pressure.

**15mm Surrey Flange:**

To suit cylinder outlet of 1" BSP Female. Suited to pumps up to 1.5 bar pressure.

**22mm Surrey Flange:**

To suit Cylinder outlet of 1" BSP Female. Suited to pumps up to 3 bar pressure.

**York Flange:**

The York flange is a modified version of the 22mm Surrey flange, with an adaptor to suit cylinders with 1" BSP Male outlets. Suited to pumps up to 3 bar pressure.

**Product Codes**

Surrey Flange 15mm - 98381635

Surrey Flange 22mm - 98381636

Surrey Flange 15mm (box of 10) - 98381638

Surrey Flange 22mm (box of 10) - 98381639

22mm York Flange Deflector - 98381637



## SSR2 and STR2

**What it does**

Positive head shower booster pump to increase water pressure to a gravity fed hot water system. Pumps available up to 2 Bar.

**Typical Applications**

For boosting water to a single shower or simple bathroom suite where the outlets are below the cold water storage tank.

**Features & Benefits**

- Low noise design - quiet induction motor and minimal turbulence pump head
- Continuously rated
- Supplied with 22mm stainless steel hoses
- Fitted with long-life seals
- Twin (STR2) & single (SSR2) impellers
- WRAS Approved
- IPX2 water ingress protection
- Regenerative impeller designed to overcome air pockets

**Product Codes****STR2-1.5C**

Twin Impeller 1.5 bar 98950216

**STR2-2.0 C**

Twin Impeller 2.0 bar 98950217

**SSR2-2.0 C**

Single Impeller 2.0 bar 98950218

**Accessories/Spares**

The installation of a Surrey Flange is recommended. Spare parts available.

**Literature**

SSR2 & STR2 Data Sheet.



## SSR2 and STR2 Universal

**What it does**

Positive & negative head shower booster pump to increase water pressure to a gravity fed hot water system. Pumps available up to 2 Bar.

**Typical Applications**

For boosting water to a single shower or simple bathroom suite where the outlets are above or below the cold water storage tank.

**Features & Benefits**

- Low noise design - quiet induction motor and minimal turbulence pump head
- Continuously rated
- Supplied with 22mm stainless steel hoses
- Fitted with long-life seals
- Twin (STR2) & single (SSR2) impellers
- WRAS Approved
- IPX2 water ingress protection
- Regenerative impeller designed to overcome air pockets
- Auto activation in Negative Head operation
- Dry run protection built in

**Product Codes****STR2-1.5 CN**

Twin Impeller 1.5 bar 98950219

**STR2-2.0 CN**

Twin Impeller 2.0 bar 98950220

**SSR2-2.0 CN**

Single Impeller 2.0 bar 98950231

**Accessories/Spares**

The installation of a Surrey Flange is recommended. Spare parts available.

**Literature**

SSR2 & STR2 Universal Data Sheet.



For more information on the products shown on these pages visit [www.showerpumpselector.co.uk](http://www.showerpumpselector.co.uk) or scan the code to the left with your mobile device to link to our new shower pump selector and technical trouble shooter.



**5 YEAR**  
warranty



## AMAZON

### What it does

Positive head shower booster pump to increase water pressure to a gravity fed hot water system. Pumps available up to 4 Bar.

### Typical Applications

For boosting water to single/multiple showers or whole house boosting where the outlets are below the cold water tank.

### Features & Benefits

- Low noise design - quiet induction motor and minimal turbulence pump head
- Continuously rated
- Supplied with 22mm stainless steel hoses
- Fitted with long-life silicon carbide seals
- Twin (STP) & single (SSP) impellers
- WRAS Approved
- IPX2 water ingress protection
- Regenerative impeller designed to overcome air pockets
- Premium brass pump head and impeller
- 5 year warranty (domestic use only)

### Product Codes

#### STP-1.5 B

Twin Impeller 1.5 bar 96787446

#### SSP-2.0 B

Single Impeller 2.0 bar 96787450

#### STP-2.0 B

Twin Impeller 2.0 bar 96787462

#### SSP-3.0 B

Single Impeller 3.0 bar 96787464

#### STP-3.0 B

Twin Impeller 3.0 bar 96787466

#### STP-4.0 B

Twin Impeller 4.0 bar 96787471

### Accessories/Spares

The installation of a Surrey Flange is recommended for pumps up to 3 bar. Spare parts available.

### Literature

Amazon Data Sheet.

**5 YEAR**  
warranty



## AMAZON Universal

### What it does

Positive & negative head shower booster pump to increase water pressure to a gravity fed hot water system. Pumps available up to 4 Bar.

### Typical Applications

For boosting water to single/multiple showers where the outlets are above or below the cold water tank.

### Features & Benefits

- Low noise design - quiet induction motor and minimal turbulence pump head
- Continuously rated
- Supplied with 22mm stainless steel hoses
- Fitted with long-life silicon carbide seals
- Twin (STN) & single (SSN) impellers
- WRAS Approved
- IPX2 water ingress protection
- Regenerative impeller designed to overcome air pockets
- Premium brass pump head and impeller
- Auto activation in Negative Head operation
- Dry run protection built in
- 5 year warranty (domestic use only)

### Product Codes

#### STN-1.5 B

Twin Impeller 1.5 bar 96787503

#### SSN-2.0 B

Single Impeller 2.0 bar 96787504

#### STN-2.0 B

Twin Impeller 2.0 bar 96787505

#### SSN-3.0 B

Single Impeller 3.0 bar 96787512

#### STN-3.0 B

Twin Impeller 3.0 bar 96788173

#### STN-4.0 B

Twin Impeller 4.0 bar 96788176

### Accessories/Spares

The installation of a Surrey Flange is recommended for pumps up to 3 bar. Spare parts available.

### Literature

Amazon Universal Data Sheet.

## WATER PRESSURE BOOSTING

**UPA 15-90 N****What it does**

Increases the pressure to one tap in domestic properties.

**Typical Applications**

Boost the pressure to one tap adding between 0.5 bar & 0.75 bar pressure with a single basin or sink tap running. Only designed for positive head applications with a flow rate of 90 - 120 l/hr to operate the flow switch.

**Features & Benefits**

- Stainless steel
- Easy to install
- Automatic or manual operation
- Suitable for water temperatures up to 70°C
- Maintenance free
- Low noise level
- Incorporates flow switch which starts or stops pump when tap is switched on or off
- 160mm port to port
- WRAS approved

**Product Code**

UPA 15-90 - 59539509



**5 YEAR**  
warranty

**SCALA2****What it does**

Equipped with intelligent pump control this fully integrated, whole house water booster pump, automatically adjusts operation to deliver constant water pressure. Providing perfect water pressure to all taps.

**Typical Applications**

One model handles all boosting needs in residential buildings with up to 3 floors and 8 outlets (ie taps, washing machine, shower, toilets).

**Features & Benefits**

- WRAS – whole product approved
- Low noise – 47dB(A) one of the quietest boosters in it's class
- Perfect water pressure in all outlets at all times
- Fast & easy Installation - all in one unit
- Easy to operate – user friendly control panel
- Compact design – fits inside a kitchen cupboard
- Affordable – great value for money
- 5 year warranty

**Product Code**

SCALA2 - 98562865

**Spares Available****HOME BOOSTER****What it does**

A cold water, whole house booster set with integrated stainless steel CM I pump, 200 ltr storage tank and PM2 controller.

**Typical Applications**

Boost mains water supply, to allow the demand requirements for a combi boiler, unvented hot water cylinder, and any outlets that require a minimum operating pressure. Suitable for most domestic properties with 1 or 2 bathrooms.

**Features & Benefits**

- Fully packaged unit for ease of installation
- Can be connected directly to the incoming water supply
- Adjustable start pressure settings via PM2 controller
- In built dry running protection
- Available, extra 180 ltr slave tank
- WRAS Approved components

Not recommended to fit the unit in a loft or attic space.

**Product Codes**

HOME BOOSTER 3.0 MD300200

HOME BOOSTER 4.5 MD450200

**Spares Available****Accessories Available**

Slave Tank Part No MCST0200



### CMB/CMBE



#### What it does

Water supply pump packages for boosting mains pressure from tank storage.

#### Typical Applications

Pressurised hot/cold water systems and water transfer from storage tanks for medium sized domestic properties with up to four bathrooms and/or garden irrigation.

#### Features & Benefits

- Compact design, small footprint.
- Wide range of flows and pressures
- Low noise for quiet operation
- All single phase options can be used in domestic environments
- Integral controls and motor/dry run protection
- With PM2 automatic stop/start controller on CMB versions
- CMBE versions - energy saving variable speed operation
- CMBE stainless steel WRAS Approved product
- CMB stainless steel WRAS Approved components
- Works with wireless Grundfos 'GO' remote

Available on Product Centre and [www.grundfos.co.uk](http://www.grundfos.co.uk) or ask your merchant.

#### Spares Available

For full list visit the Grundfos Product Centre at [www.grundfos.co.uk](http://www.grundfos.co.uk).



### CM BYE-PAC



#### What it does

Water supply pump packages with inclusive byelaws break tank for boosting mains pressure.

#### Typical Applications

Pressurised hot/cold water systems from integral storage tanks for medium sized domestic properties with up to four bathrooms and garden irrigation.

#### Features & Benefits

- Compact design with inclusive 50 or 100 gallon tank
- Wide range of flows and pressures available
- Low noise for quiet operation
- All single phase options can be used in domestic environments
- Integral controls and motor/dry run protection
- With PM2 automatic stop/start controller
- Stainless steel pump with WRAS Approval

#### Product Codes

See CM Bye-Pac Sales Leaflet for product codes.

#### Spares Available

Pumps and pump spares, vessel and main components.



### MAX-E BOOST



#### What it does

Single pump, cost effective packaged cold water booster set. Constant pressure, variable speed operation. Soft start/stop eliminates water hammer.

#### Typical Applications

Cold water pressure boosting for properties with two or more bathrooms, or installations with high flow outlet fittings e.g. body jets.

#### Features & Benefits

- Packaged booster set with integral control
- Variable speed operation for constant pressure
- Factory commissioned to 3 bar, at 1.9 l/s flow
- Control panel with indicator lights
- Single phase supply
- Supplied with anti vibration mounts
- Supplied with low level float switch
- WRAS approved pump and pressure vessel
- Works with wireless Grundfos 'GO' remote

#### Product Code

MAX-E BOOST - 98536448

#### Spares Available

For full list visit the Grundfos Product Centre at [www.grundfos.co.uk](http://www.grundfos.co.uk).

#### Accessories Available

1 1/4" Flexible Coupling- GBPC1001.

For larger demand requirements, please see the Grundfos GTI at [www.grundfos.co.uk](http://www.grundfos.co.uk).

Pump Type	UPA	STR2 & SSR2						A					
Bar Pressure		1.5		2.0		2.0		1.5		2.0		3.0	
		Twin				Single		Twin					
Product Model	UPA 15-90 N	STR2-1.5 C	STR2-1.5 CN	STR2-2.0 C	STR2-2.0 CN	SSR2-2.0 C	SSR2-2.0 CN	STP-1.5 B	STN-1.5 B	STP-2.0 B	STN-2.0 B	STP-3.0 B	STN-3.0 B
Positive / Universal Head	Positive	Positive	Universal	Positive	Universal	Positive	Universal	Positive	Universal	Positive	Universal	Positive	Universal
Application													
Boost hot or cold to individual taps	(X)					(X)	(X)						
Bath or Basin Mixer		(X)	(X)	(X)	(X)			(X)	(X)	(X)	(X)	(X)	(X)
Boost Hot Water (Cold Mains & Gravity Hot)						(X)	(X)						
Shower Only (Hot & Cold Gravity)		(X)	(X)	(X)	(X)			(X)	(X)	(X)	(X)	(X)	(X)
Multi Function Shower Head				(X)	(X)					(X)	(X)	(X)	(X)
Standard Bath Mixer/Shower		(X)	(X)	(X)	(X)			(X)	(X)	(X)	(X)	(X)	(X)
Shower Column (Gravity Hot & Cold)												(X)	(X)
Bathroom Booster				(X)	(X)	(X)2	(X)2			(X)	(X)	(X)	(X)
Electric Shower (Tank Fed)						(X)	(X)						
Boost to Combination Boiler (From Tank)													
Boost to Combination Boiler (Integrated Tank)													
Boost to Unvented Hot Water Storage (from Tank)													
Boost to Unvented Hot Water Storage (Integrated Tank)													
House Booster (Gravity) - 2 Bathrooms												(X)	(X)
House Booster (Gravity) - 3 Bathrooms													
House Booster (Gravity) - 4 or more Bathrooms													
Commercial Booster (Cold Only)													
Construction Material	S/S	Composite											
Pump Noise Level at 1m		55 - 65 dBA						55 - 65 dBA					
Min Pipe Size (Reducer may be required)		15 mm											

\* All product continuously rated / \* Amazon Range WRAS Approved, all other ranges WRAS compliant.

AZON							SCALA2	HOME BOOSTER		CMB/CMBE	BYE-PAC	MAX-E Boost
4.0		2.0		3.0		5.0	3.0	4.5				
		Single		Single								
STN-3.0 B	STP-4.0 B	STN-4.0 B	SSP-2.0 B	SSN-2.0 B	SSP-3.0 B	SSN-3.0 B	SCALA2	Home Booster 3.0 bar	Home Booster 4.5 bar			
Universal	Positive	Universal	Positive	Universal	Positive	Universal	Universal	Universal	Universal	Universal	Universal	Universal
			⊗	⊗	⊗	⊗						
⊗												
			⊗	⊗	⊗	⊗						
⊗												
⊗	⊗	⊗										
⊗	⊗	⊗										
⊗	⊗	⊗	⊗2	⊗2	⊗2	⊗2						
			⊗	⊗	⊗	⊗						
			⊗		⊗		⊗					
								⊗	⊗		⊗	
					⊗	⊗	⊗					⊗
								⊗	⊗		⊗	
⊗	⊗	⊗					⊗					
	⊗	⊗					⊗					
									⊗		⊗	⊗
Brass							Composite	Stainless Steel				
< 70 dBA		55 - 65 dBA				47 dBA	65 dBA		Various		65 dBA	
22 mm						32mm	15 / 22mm		Various		11/4 BSPF	

⊗ = 1 pump required ⊗2 = 2 pumps required

## SHOWER PUMP BASICS

When selecting a shower pump, it is important to consider if the system is positive or negative head and what pressure is desired.

### Negative Head System

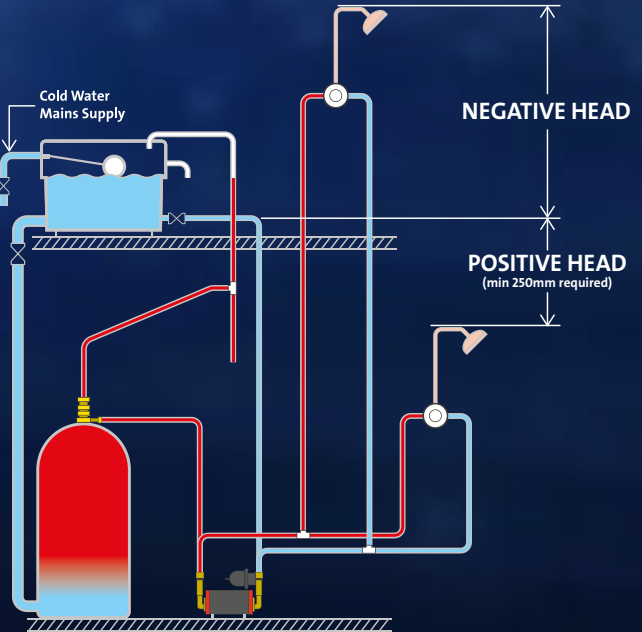
A negative head condition exists where the flow from the outlet is less than 0.5 litre/min. This is usually when there is insufficient pressure, under gravity, to provide a flow at the outlet.

### Positive Head System

A positive head condition exists where the flow from the outlet is more than 0.5 litre/min. This is usually when there is sufficient pressure, under gravity, to provide a flow at the outlet.

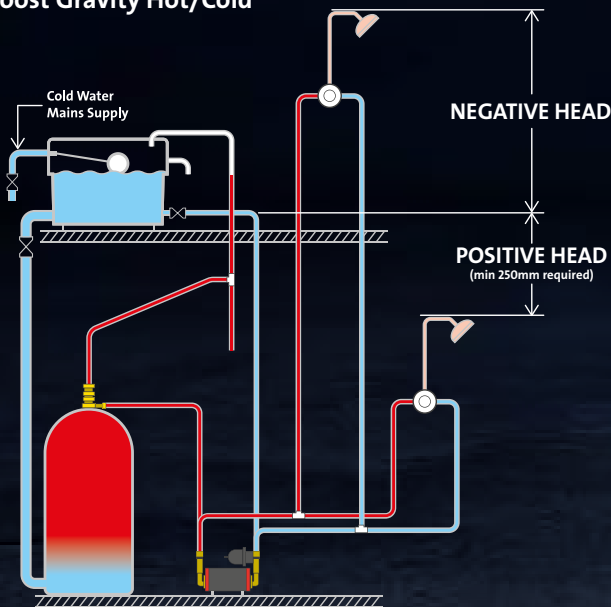
### Pump Pressure (measured in Bar)

In pump performance, 1.0 Bar is generally considered low pressure, 1.5-2.0 Bar medium pressure and  $\geq 3.0$  Bar high pressure, eg. to run multiple showers/heads.

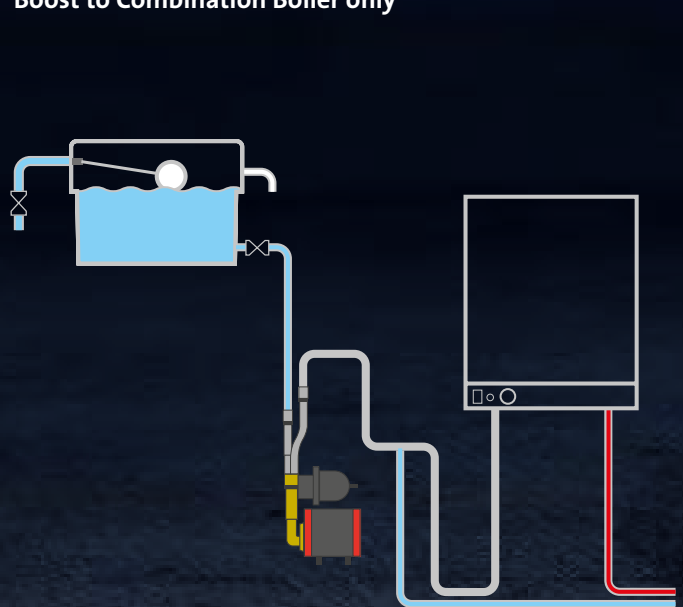


## SHOWER BOOSTER APPLICATION GUIDE

### Boost Gravity Hot/Cold



### Boost to Combination Boiler only



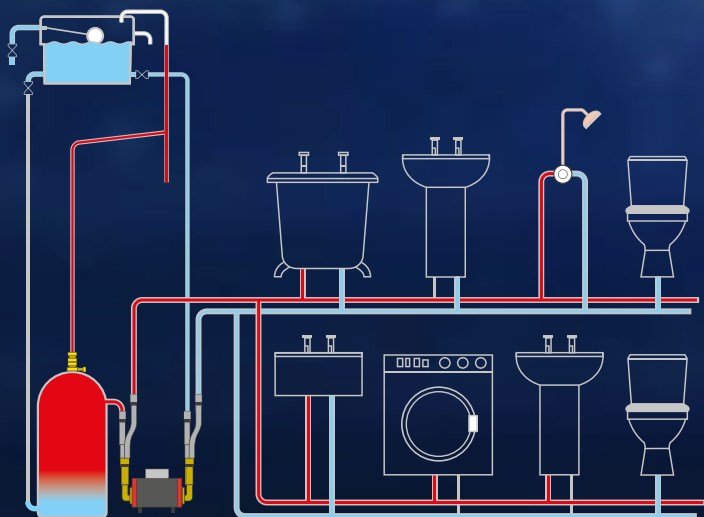
**Positive Head Pump Options:**  
SSR2, STR2 & AMAZON

**Negative Head Pump Options:**  
SSR2, STR2, AMAZON  
Universal Pumps

**Pump Options:**  
AMAZON Universal Single (SSN)/SCALA2 / CMBE

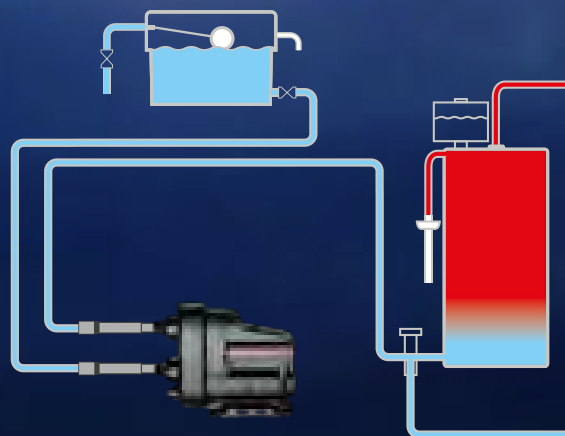
## SHOWER BOOSTER APPLICATION GUIDE

### Boost Whole House Hot and Cold - Gravity fed, Positive Head



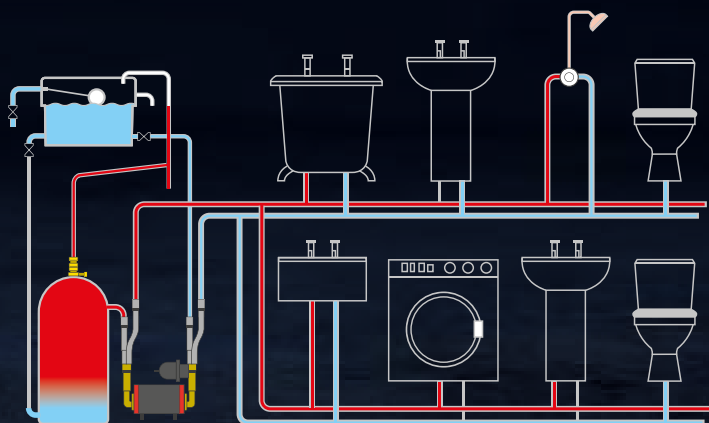
**Pump Options:**  
AMAZON (STP)

### Boost Whole House – Unvented Cylinder Cold water boost to unvented hot water cylinder



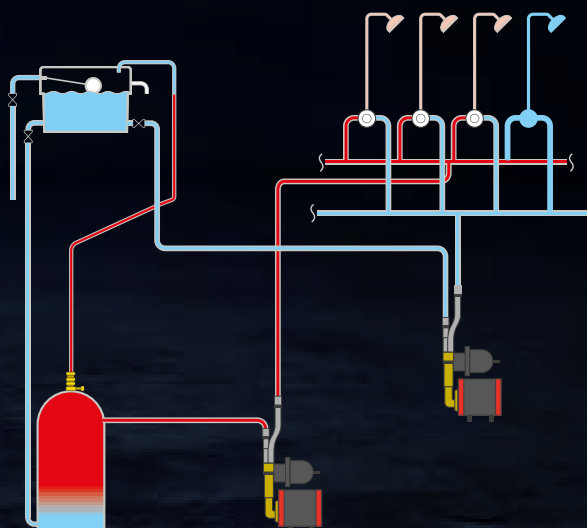
**Pump Options:**  
MQ, CMB, CMBE, Max-e Boost, SCALA2  
With Integral Water Tank :  
HOME BOOSTER, CM BYE-PAC

### Boost Whole House Hot and Cold - Gravity fed, Negative Head



**Pump Options:**  
AMAZON Universal Twin (STN)

### Boost Hot/Cold Multi Outlet



**Pump Options:**  
SCALA2\*, AMAZON Universal Single (SSN)

TMV/Thermostatic shower valve protection required.  
\* Max temperature of up to 45°C

## MACERATORS &amp; WASTE WATER REMOVAL



The Grundfos SOLOLIFT2 range has completely revolutionised the addition of extra facilities away from the main soil stack.

The SOLOLIFT2 WC models contain a powerful motor, robust vortex pump and professional hardened stainless steel cutter (more able to withstand occasional 'unauthorised' objects) – which are assembled together in a self contained unit that can be completely removed without the SOLOLIFT2 having to be drained or moved from situ.

**SOLOLIFT2 WC-1****What it does**

Removes wastewater and toilet waste from a single w.c. and basin where outlet is away from the main soil stack.

**Typical Applications**

Extra bathrooms, cloakrooms, shower rooms in loft or basement conversions, holiday cottages, B&B's, student or disabled accommodation etc

**Features & Benefits**

- WC-1 = Fixed WC inlet, plus 1 additional optional inlet
- Unique modern design
- Low noise level
- Unique reliable professional cutter
- Modular design for ease of service
- 'Clean hands' serviceability
- Thermal overload switch
- High power motor
- Vertical or horizontal discharge
- Internal benching -minimal residue
- Self cleaning, no need for chemicals
- Vent pipe connection option
- Continuous operation without tripping
- Flexible discharge pipe adapters for outer pipe diameters of  $\phi 23$ ,  $\phi 25$ ,  $\phi 28$ , and  $\phi 32$ mm

**Product Code**

SOLOLIFT2 WC-1 - 97775329

**SOLOLIFT2 WC-3****What it does**

Removes wastewater and toilet waste from a single w.c., basin, shower and bidet where outlet is away from the main soil stack.

**Typical Applications**

Extra bathrooms, cloakrooms, shower rooms in loft or basement conversions, holiday cottages, B&B's, student or disabled accommodation etc

**Features & Benefits**

- WC-3 = Fixed WC inlet, plus 3 additional optional inlets
- Unique modern design
- Low noise level
- Unique reliable professional cutter
- Modular design for ease of service
- 'Clean hands' serviceability
- Thermal overload switch
- High power motor
- Vertical or horizontal discharge
- Internal benching -minimal residue
- Self cleaning, no need for chemicals
- Vent pipe connection option
- Continuous operation without tripping
- Flexible discharge pipe adapters for outer pipe diameters of  $\phi 23$ ,  $\phi 25$ ,  $\phi 28$ , and  $\phi 32$ mm

**Product Code**

SOLOLIFT2 WC-3 - 97775330



### See the Grundfos SOLOLIFT2 Installation Video

<http://uk.grundfos.com/about-us/news-and-press/news/how-to-install-a-sololift2.html>





### SOLOLIFT2 CWC-3

#### What it does

Removes wastewater and toilet waste from a wall hung toilet, basin & shower where outlet is away from the main soil stack.

#### Typical Applications

Extra bathrooms, cloakrooms, shower rooms in loft or basement conversions, holiday cottages, B&B's, student or disabled accommodation etc

#### Features & Benefits

- For wall hung toilets, compact and slim for easy integration.
- CWC-3 = Compact unit with fixed WC inlet, plus 3 additional optional inlets
- Unique modern design
- Low noise level
- Unique reliable professional cutter
- Modular design for ease of service
- 'Clean hands' serviceability
- Thermal overload switch
- High power motor
- Vertical or horizontal discharge
- Internal benching - minimal residue
- Self cleaning, no need for chemicals
- Vent pipe connection option
- Continuous operation without tripping
- Flexible discharge pipe adapters for outer pipe diameters of  $\varnothing 23$ ,  $\varnothing 25$ ,  $\varnothing 28$ , and  $\varnothing 32$ mm

#### Product Code

SOLOLIFT2 CWC-3 - 97775331



### SOLOLIFT2 C-3

#### What it does

Removes wastewater from a washing machine, dishwasher and basin where outlet is away from the main soil stack.

#### Typical Applications

Especially designed for high temp liquid wastewater from washing machines or dishwashers. Use when adding a utility room, or for loft or basement conversions, holiday cottages, B&B's, student or disabled accommodation etc

#### Features & Benefits

- Compact unit with 3 optional inlets
- Compact and slim for installation under a washbasin or in a closet
- Low noise level
- Modular design for ease of service
- Thermal overload switch
- Up to 90°C water temperature
- Vortex impeller reduces clogging
- Adjustable start level
- High power motor
- Vertical or horizontal discharge
- Vent pipe connection option
- Continuous operation without tripping
- Flexible discharge pipe adapters for outer pipe diameters of  $\varnothing 23$ ,  $\varnothing 25$ ,  $\varnothing 28$ , and  $\varnothing 32$ mm

#### Product Code

SOLOLIFT2 C-3 - 97775332



### SOLOLIFT2 D-2

#### What it does

Removes wastewater from a shower and basin where outlet is away from the main soil stack.

#### Typical Applications

Extra sink, basin or shower in a loft or basement conversion, holiday cottages, B&B's, student or disabled accommodation etc

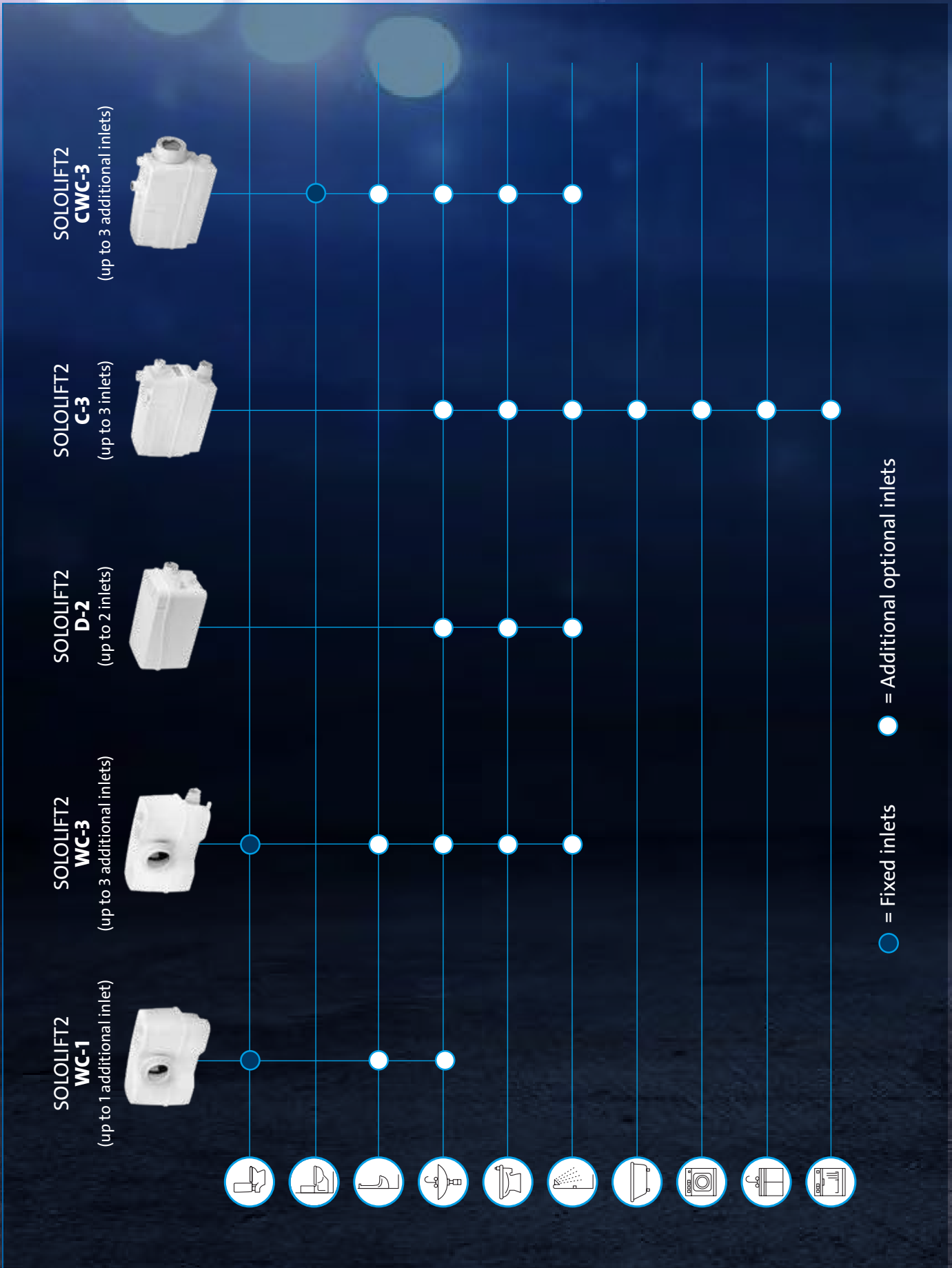
#### Features & Benefits

- Compact unit with 2 optional inlets
- Unique design with smooth line and rounded edges - fits every modern bathroom environment
- Low noise level
- Modular design for ease of service
- Thermal overload switch
- Vortex impeller helps reduce clogging from fibres and hair
- 20mm free passage
- 80mm minimum trap outlet height
- High power motor
- Vent pipe connection option
- Continuous operation without tripping
- Flexible discharge pipe adapters for outer pipe diameters of  $\varnothing 23$ ,  $\varnothing 25$ ,  $\varnothing 28$ , and  $\varnothing 32$ mm

#### Product Code

SOLOLIFT2 D-2 - 97775333

SOLOLIFT SELECTOR GUIDE



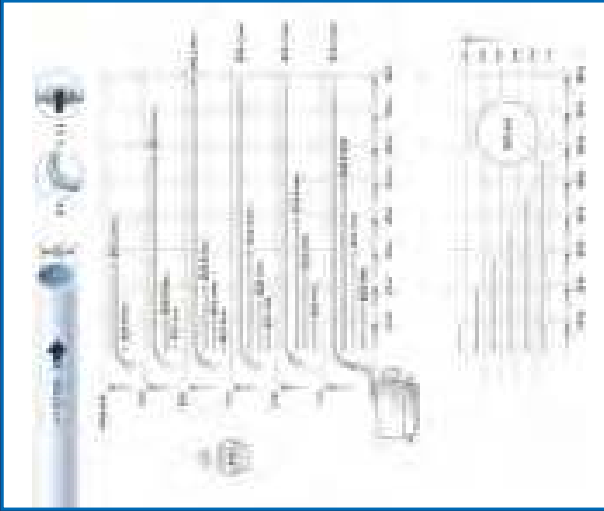
**SOLOLIFT2 WC-1**



**SOLOLIFT2 WC-3**



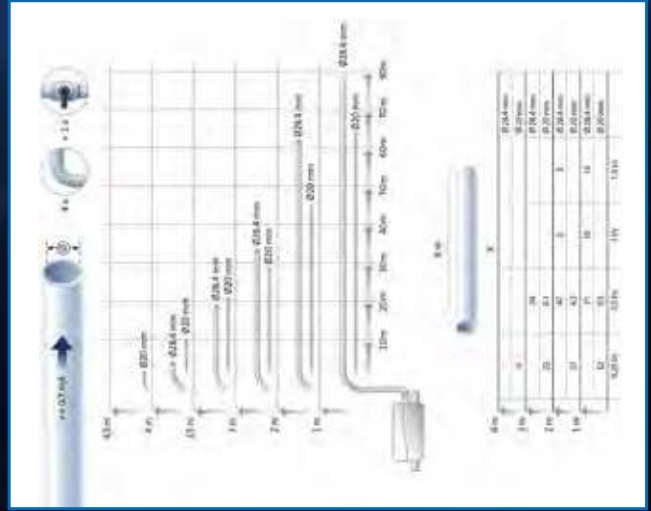
**SOLOLIFT2 CWC-3**



**SOLOLIFT2 C-3**



**SOLOLIFT2 D-2**



**SOLOLIFT2 ACCESSORIES**

Type	Product	Grundfos P/N
Inlet kit D40/40/32, spare	D-2	97775334
(A) Second inlet kit D50/40/40, spare	WC-3/ CWC-3/C-3	97775335
(B) Adapter kit UK (Ø 36mm), spare	All versions	97775336
Alarm PCB	WC-1/WC-3/ CWC-3	97772315
(C) Service drain hose (500mm)	All versions	97789093
(D) Extension hose kit for left hand discharge (500mm, Ø32/38mm)	WC-1/WC-3	97772316

## GREYWATER REMOVAL

**UNILIFT CC****What it does**

The CC is a composite/stainless steel submersible drainage pump designed for pumping clean, non-aggressive water & slightly dirty (grey) water.

**Typical Applications**

Removal of waste water from washing machines, baths, showers, basins, emptying swimming pools, ponds, fountains, and general water transfer duties. They are also ideal for garden irrigation from rainwater collection tanks and emergency use in the event of flooding.

**Features and Benefits**

- Composite materials
- Stainless steel strainer
- Low suction down to 3mm
- Single phase models only
- Manual or automatic models
- Pumps up to 10mm solids
- Adaptor for flexible connection to outlet with non return valve
- Built in thermal overload construction
- Water cooled dry runner pump - allows for continuous operation

**Product Code**

UNILIFT CC 5 M-1	96280977
UNILIFT CC 5 A-1	96280978
UNILIFT CC 7 M-1	96280979
UNILIFT CC 7 A-1	96280980
UNILIFT CC 9 M-1	96280981
UNILIFT CC 9 A-1	96280982

**Key**

5/7/9 = max head (m), M = Manual, A = Automatic, 1 = single phase

**Spares Available** - Yes

**Accessories Available** - Yes

**UNILIFT KP/AP****What it does**

The KP (for smaller applications) and AP (for medium applications) are stainless steel submersible drainage pumps designed for pumping clean, non-aggressive water & slightly dirty (grey) water such as effluent from septic and sludge treating systems.

**Typical Applications**

Removal of waste water from washing machines, baths, showers, basins, emptying swimming pools, ponds, fountains, and general water transfer duties. They are also ideal for garden irrigation from rainwater collection tanks and emergency use in the event of flooding.

**Features and Benefits**

- Stainless Steel construction - robust and capable of liquid temperatures up to 50°C
- Single and three phase models available
- 110v KP models available for site operation
- Manual or automatic models available
- Pumps up to 10mm solids (KP) and 12mm solids (AP)
- Automatic motor protection on single phase models
- Continuously rated motors

**Product Code**

KP 150 M-1	011K7100
KP 150 A-1	011K7700
KP 250 M-1	012K7100
KP 250 A-1	012K7700
KP 350 M-1	013N7300
KP 350 A-1	013N7800
AP 12.40.04.1	96011014
AP 12.40.04.A1	96404179

**Key KP**

150/250/350 = rated motor output  
P2(W), M = Manual, A = Automatic,  
1 = single phase

**Key AP**

12 = free passage,  
40 = pipe connection (mm),  
04 = motor power (kW)

Further models available –  
please visit the Product Center at  
[www.grundfos.co.uk](http://www.grundfos.co.uk)

**Spares Available** - Yes

**Accessories Available** -

Boxed hose kit - 10mtrs of 1 1/4" flat hose  
and connections -  
Part No 99110020

Non return valve ( pack of 10 ) -  
Part No 15221

## GRUNDFOS PRODUCT CENTER The online product selection tool

The Grundfos Product Center is an online search and sizing tool that helps you choose the right pump for a new or existing installation and replaces Grundfos WEBCAPS and WINCAPS.

In the Product Center, you can size pumps, browse the Grundfos product catalogue, find appropriate replacement pumps, or find pumps for handling specific liquids. As the definitive product search system for all of Grundfos, the Grundfos Product Center covers every sector we serve, including domestic and commercial building services, the water supply industry, wastewater management, industry and OEM solutions. **To find out more about the Grundfos Product Center visit [www.grundfos.co.uk/gpc](http://www.grundfos.co.uk/gpc)**

**Sizing** Enter your system requirements for pump recommendations, including life cycle cost calculations.

**Catalogue** For each pump in our product catalogue the Grundfos Product Center gives you all the information you need – including pump curves, technical specs, CAD drawings, available spare parts, installer guides, videos and other support materials – all in one place on the pump's product page.

**Replacement** Instant replacement recommendations by just entering the make and model of your old pump.

**Liquids** A drop-down box makes it easy to select the liquid/medium that you wish to pump.



## GRUNDFOS INSTALLER COMPANION APP DELIVERING 24/7 SUPPORT

Recognising that a picture can often replace a thousand words, or an easy to use sizing guide can prevent hours of frustrating rework, the Grundfos Installer Companion app is a valuable mobile assistant developed specifically for plumbers, installers and heating engineers.

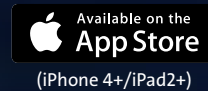


**GRUNDFOS  
FOR INSTALLERS**



**Grundfos for Installers is the programme combining Grundfos' training, training and news, in one easy to access resource.**

Visit and join now at:  
[www.grundfos.co.uk/installers](http://www.grundfos.co.uk/installers)



## WARRANTY AND SUPPORT

Unless otherwise stated, the products in this brochure are warranted against manufacturing defects for 24 months from installation or 30 months from manufacture (covers 6 months shelf life).

**SHOWER PUMPS** (pages 8 & 9) Please leave the pump installed & call the technical helpline, as the majority of issues can be resolved over the phone.

### SHOWER PUMP SUPPORT

**Telephone:** 01525 850000

**Email:** [grundfos-uk@sales.grundfos.com](mailto:grundfos-uk@sales.grundfos.com)

**SMALL PUMPS** should be returned to place of purchase, or alternatively contact the Customer Support team for advice.

### CUSTOMER SUPPORT

**Telephone:** 01525 850000

**Email:** [grundfos-uk@sales.grundfos.com](mailto:grundfos-uk@sales.grundfos.com)

**MACERATORS & LARGE PUMPS** should be left installed. Please contact the Grundfos Service Team for advice.

### SERVICE TEAM

**Telephone:** 01942 263628

**Email:** [grundfos-uk@sales.grundfos.com](mailto:grundfos-uk@sales.grundfos.com)

For your convenience the Grundfos Installer app & website provide 24/7 access to manuals, fitting videos & FAQ guides.

## PUMP SELECTION QUICK GUIDE

### DOMESTIC PUMPS



**UPS3** - Supersedes the best-selling domestic circulator in the UK. Built on a high reliability platform proven in millions of boilers, with improved efficiency, head, diagnostics and fitting time.



**ALPHA1** - Highest efficiency domestic circulator on the market, with special constant pressure mode for underfloor heating and single pipe heating systems.



**NEW ALPHA3 (Model B)** - The UK's most energy efficient domestic heating pump. For wireless hydronic balancing of the heating system via the Grundfos GO BALANCE app.



**NEW UPS2** - British built, the energy efficient replacement for the previous Grundfos UPS light commercial circulators, up to 8m head.



**MAGNA1 (model C)** - Energy efficient replacement for large UPS circulators, for heating or cooling.



**MAGNA3** - The most energy efficient large circulator today, with sophisticated controls for enhanced communication ideal for upgrade/replacement of original MAGNA range.

UPS MODELS	Equivalent UPS3 Models		Equivalent ALPHA Models
UPS 15-50	UPS3 15-50/65		ALPHA1 15-50/60 or ALPHA3 15-50-/60
UPS 15-60	UPS3 15-50/65		ALPHA1 15-50/60 or ALPHA3 15-50-/60
UPS2 15-50/60	UPS3 15-50/65		ALPHA1 15-50/60 or ALPHA3 15-50-/60
UPS MODELS	Equivalent UPS2	Equivalent MAGNA1 Models	Equivalent MAGNA3 Models
UPS 25-55	UPS2 25-80	MAGNA1 25-40	MAGNA3 25-40
UPS 25-80 (speed 1 & 2)	UPS2 25-80	MAGNA1 25-60	MAGNA3 25-60
UPS 25-80 (speed 3)	UPS2 25-80	MAGNA1 25-80	MAGNA3 25-80
UPS 25-100	–	MAGNA1 25-100	MAGNA3 25-100
UPS 32-55	UPS2 32-80	MAGNA1 32-60	MAGNA3 32-60
UPS 32-80	UPS2 32-80	MAGNA1 32-80	MAGNA3 32-80
UPS 32-100	–	MAGNA1 32-100	MAGNA3 32-100
UPS 40-50	–	MAGNA1 40-40 F + Spacer 96281076	MAGNA3 40-40 F + Spacer 96281076
UPS 40-80	–	MAGNA1 40-60 F + Spacer 96281076	MAGNA3 40-60 F + Spacer 96281076
UPSD 40-50	–	MAGNA1 D 40-40 F + Spacer 96281076	MAGNA3 D 40-40 F + Spacer 96281076
UPSD 40-80	–	MAGNA1 D 40-60 F + Spacer 96281076	MAGNA3 D 40-60 F + Spacer 96281076
SINGLE PHASE UPS MODELS	Equivalent MAGNA1 Models		Equivalent MAGNA3 Models
UPS(D) 32-30/4	MAGNA1 (D) 32-40		MAGNA3 (D) 32-120
UPS(D) 32-60/2	MAGNA1 (D) 32-100		MAGNA3 (D) 32-120
UPS(D) 32-120/2	MAGNA1 (D) 32-120		MAGNA3 (D) 32-120
UPS(D) 40-30/4	MAGNA1 (D) 40-40 + Spacer 96281076		MAGNA3 (D) 40-80 + Spacer 96281076
UPS(D) 40-60/4	MAGNA1 (D) 40-60 + Spacer 96281076		MAGNA3 (D) 40-80 + Spacer 96281076
UPS(D) 40-60/2	MAGNA1 (D) 40-60 + Spacer 96281076		MAGNA3 (D) 40-80 + Spacer 96281076
UPS(D) 40-120/2	MAGNA1 (D) 40-120		MAGNA3 (D) 40-120
UPS(D) 40-180/2	MAGNA1 (D) 40-150		MAGNA3 (D) 40-150
UPS(D) 40-185	MAGNA1 (D) 40-180		MAGNA3 (D) 40-180
UPS(D) 50-30/4	MAGNA1 (D) 50-40 + Spacer 96281077		MAGNA3 (D) 50-40 + Spacer 96281077
UPS(D) 50-60/4	MAGNA1 (D) 50-60 + Spacer 96281077		MAGNA3 (D) 50-60 + Spacer 96281077
UPS(D) 50-60/2	MAGNA1 (D) 50-60 + Spacer 96281077		MAGNA3 (D) 50-60 + Spacer 96281077
UPS(D) 50-120/2	MAGNA1 (D) 50-120		MAGNA3 (D) 50-120
UPS(D) 50-180/2	MAGNA1 (D) 50-150		MAGNA3 (D) 50-150
UPS(D) 50-185	MAGNA1 (D) 50-180		MAGNA3 (D) 50-180
UPS(D) 65-30/4	MAGNA1 (D) 65-40		MAGNA3 (D) 65-40
UPS(D) 65-60/4	MAGNA1 (D) 65-60		MAGNA3 (D) 65-60
UPS(D) 65-60/2	MAGNA1 (D) 65-60		MAGNA3 (D) 65-60
UPS(D) 65-120/2	MAGNA1 (D) 65-120		MAGNA3 (D) 65-120

(D) = twin headed pump option is available.

